

2025–2026 | **FOURTH YEAR OPTIONS DISCUSSION**

Department of Architecture | Academic Affairs Committee
Spring 2024

4TH YEAR DISCUSSION | **TEAM**

Jessica Canfield | APDesign Director of International Programs

Mitzi Farmer | Director of Academic Services

Michael Gibson | Associate Professor + KCDC Affiliated Faculty

Amanda Mack | Office of International Programs

Kylie McConnell | KCDC Program Coordinator

Michael McGlynn | Architecture Internship Coordinator

Chad Schwartz | Architecture Academic Affairs Chair

4TH YEAR DISCUSSION | **PRESENTATIONS**

- 1: **Introduction** | Chad Schwartz
- 2: **Study Abroad in Italy** | Jessica Canfield
- 3: **Study Abroad Elsewhere** | Amanda Mack
- 4: **Academic Internship** | Michael McGlynn
- 5: Kansas City Design Center | **KCDC** | Michael Gibson + Kylie McConnell
- 6: **The Advising Process** | Mitzi Farmer
- 7: **Questions + Answers**

4TH YEAR DISCUSSION | **STUDIOS**

1: **ARCH 605 | Architectural Design Studio 5**

Design and development of an architectural project beyond schematic design and into the integration of structure, construction, systems, and architectural detailing. The beginning of comprehensive or integrated design.

Taken on Campus

2: **ARCH 606 | Architectural Design Studio 6**

Design and development of architectural project(s) proposed by faculty and centered on design/build, research projects, competitions, and other opportunities that fall outside the normative studio model.

Taken on Campus, at KCDC, or through Study Abroad

4TH YEAR DISCUSSION | PATHS

	SUMMER	FALL	SPRING	SUMMER
Option 1 or 1B with KCDC No Internship or Study Abroad	—	ADS 5	ADS 6 On Campus or KCDC	—
Option 2 Study Abroad Only	—	ADS 5	ADS 6 Study Abroad Italy or Elsewhere	—
Option 3 or 3B with KCDC Internship Only	ADS 5 + PREP	ADS 6 On Campus or KCDC	INTERN <div style="background-color: #f9c79f; width: 100px; height: 15px; border-radius: 5px;"></div>	
Option 4 Internship and Study Abroad	ADS 5 + PREP	ADS 6 Study Abroad Italy Only	INTERN <div style="background-color: #f9c79f; width: 100px; height: 15px; border-radius: 5px;"></div>	

STUDY ABROAD

Jessica Canfield + Amanda Mack

Why Education Abroad?

- **Academic challenge**—experience a range of topics, assignment types, and instruction styles as you engage in various coursework.
- **Professional growth**—visit notable locations and experience historic and modern design and planning precedents. An education abroad experience can be a desirable credential to future employers.
- **Personal enrichment**—develop independence, a greater sense of self, and increased awareness and appreciation for other cultures.
- **Global perspective**—broaden awareness and multicultural competency by living in another country.
- Have a once-in-a-lifetime experience as a University student.

Potential Challenges When Studying Abroad

- **The language of instruction may not be English**, but full proficiency of the local language is not necessary
- **The academic calendar**, including exact semester start and end dates, may differ from K-State.
- **Minimal interaction with professors** outside of class. University culture may be hierarchical and more formal than at K-State.
- **Homesickness** and **culture shock**

Note: K-State and APDesign have excellent relationships with our partner institutions, but we do not influence their policies or procedures. If you elect to study at a foreign university, you must be prepared to accept and manage potential challenges.

2025-2026 Education Abroad Options for APD Students

Program	City, Country	Program Type	Min. GPA	Enrollment Capacity	ARCH	IARC	INDD	LA	RCP	RECD
APD Italian Studies Program-Orvieto SPRING	Orvieto, Italy	K-State	2.5*	~40	x	x		x	x	x
APD Italian Studies Program-Orvieto FALL	Orvieto, Italy	K-State	2.5*	~30	x		x			
K-State in Italy-Orvieto SUMMER <small>(studio courses not offered in summer program)</small>	Orvieto, Italy	K-State	2.5	N/A	x	x	x	x	x	x
Other Education Abroad Programs										
BOKU Univ. of Natural Resources and Life Sciences	Vienna, Austria	Exchange	3.0	2				Spring		
Coburg University of Applied Sciences	Coburg, Germany	Exchange	3.0	3		Spring				
Czech Technical University	Prague, Czech Republic	Exchange	3.0	6	Spring	Spring				
Danish Institute for Study Abroad (DIS)	Copenhagen, Denmark	Direct Enroll	3.0	5	Spring	Spring or Summer	Fall or Summer	Spring	Spring	
University of New South Wales	Sydney, Australia	Exchange	3.0	1					Spring	
SAI ELISAVA (Barcelona)	Barcelona, Spain	Direct Enroll	3.0	2			Fall			
University of Sheffield	Sheffield, England	Direct Enroll	3.0	TBD					Spring	
Trier University of Applied Sciences	Trier, Germany	Exchange	3.0	TBD		Spring				
University of Western Australia	Perth, Australia	Exchange	3.0	1	Spring			Spring		
Alternative Education Abroad	Note: Alternative Education Abroad Programs are available by petition only. This option requires extensive advance preparation and submission of a petition for endorsement by your Department, the APD International Studies Committee (ISC), and K-State Office of International Programs (OIP). Endorsement does NOT guarantee admission by the partner institution.									

*If the program is at capacity, the minimum GPA may be raised.

Notes:

- Program availability and enrollment capacity are subject to change.
- ALL Education Abroad programs require an Off-Campus Study Application and students must receive endorsement from the APDesign International Studies Committee.
- Program Type and tuition: K-State = tuition paid to K-State, Exchange = tuition paid to K-State, Direct Enroll = tuition paid to that institution

APDesign Italian Studies Program

Orvieto, Italy

<https://www.youtube.com/watch?v=cYmFC3WQndE>



THE COLLEGE of
ARCHITECTURE, PLANNING & DESIGN // K-STATE

APDesign Italian Studies Program

Orvieto, Italy

[Link to Program Information from APDesign](#)

[Link to Program information from K-State OIP](#)



**Spring or Fall program option
for ARCH Students**

- Min. GPA 2.50*
- Enrollment Capacity:
 - Approx. 40 students for Spring for all disciplines
 - Approx. 30 students for Fall for all disciplines
- Language of instruction is English
- Studio and seminar classes taught by K-State and Italian professors
- Studio and seminar typically meet two days per week
- Projects focus on issues/concerns pertaining to the local community
- Program includes multiple field trips and cultural workshops
- Students live in furnished apartments shared with fellow KSU students
- **Need to be motivated and flexible**

***If the program is at capacity, minimum GPA may be raised.**



THE COLLEGE of
ARCHITECTURE, PLANNING & DESIGN // K-STATE

APDesign Italian Studies Program

Orvieto, Italy



- Orvieto is located about one hour north of Rome in the Umbria region of Italy.
- It has a rich history, from its Etruscan underground to its Romanesque cathedrals.
- It offers important archaeological, architectural, and urban sites to visit and appreciate.
- Orvieto is a friendly, calm, and welcoming atmosphere.
- The city is considered a living classroom where students are immersed in a culturally stimulating environment surrounded by piazzas, palaces, churches, and cobble lanes.

APDesign Italian Studies Program

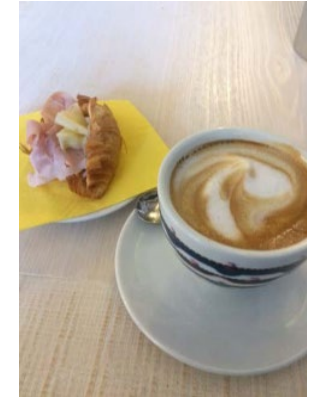
Orvieto, Italy



- Students live in fully furnished apartments located in the historic part of the city.
- Apartments are arranged by an Italian agency and accommodate two to six students.
- Students shop for food and cook meals. They are introduced to the local market and take a cooking class with a local chef.

APDesign Italian Studies Program

Orvieto, Italy



APDesign Italian Studies Program

Orvieto, Italy



- The program includes multiple one-day field trips (typically to Rome, Siena, Florence, Assisi, Villa Lante) and several extended, two to six-day field trips (typically to Venezia, Vicenza, and Verona in the north and to Pompeii, Sorrento, and the Amalfi Coast in the south)
- Field trips are led by K-State faculty, the Italian professors, and/or professional guides.
- The field trips provide students with opportunities to experience many aspects of Italian culture, art, urban planning, landscape architecture, architecture, interior architecture, and industrial design.

APDesign Italian Studies Program

Orvieto, Italy



- The program includes multiple cultural workshops as part of the curriculum.
- Topics may include:
 - Leather
 - Svinnere
 - Honey
 - Cheese
 - Mosaic Olive Oil & Basketry
 - Craft Beer
 - Photography
 - Ceramic

K-State in Italy (Summer Program)

Orvieto, Italy

[Link to Program Information](#)



<https://ksu.studioabroad.com/index.cfm?FuseAction=Programs.ViewProgramAngular&id=12957>

Summer program option for all K-State Students

Note: this program runs mid-May to mid-July

- Min. GPA 2.5
- Open to all K-State Students
- Program is 4-weeks, dates vary
- Language of Instruction in **English** by K-State Professors
- *Studio courses are **NOT** offered in this program
- Course offerings change each summer
- Organized travel opportunities to Rome and Florence
- **Need to be motivated and flexible**

K-State in Italy Orvieto, Italy



<https://ksu.studioabroad.com/index.cfm?FuseAction=Programs.ViewProgramAngular&id=12957>

**Summer program option
for all K-State Students**

Example of Summer 2024 Program, program offerings vary each summer

**Travel
is
Education**

The program is open to all K-State majors, and no prior design or drawing experience is required.

Summer 2024
K-State in Italy | APDesign Program

June 4 – July 6, 2024
June 4 (depart U.S.) and July 6 (depart Italy)

Courses:
Anatomy of Public Space | 4 – credits
Prof. Jessica Canfield, APDesign Director of International Program

Seeing Through Watercolor | 3 – credits
Prof. Otto Chanyakorn



Other Education Abroad Programs



THE COLLEGE of
ARCHITECTURE, PLANNING & DESIGN // K-STATE

Off-Campus Options Meeting, April 2024

Information Subject to Change



Czech Technical University

Prague, Czech Republic

[Link to Program Information](#)



Unknown (n.d.). Prague (photograph). Retrieved June 2017 from <https://www.finleap.com/blog/the-5-hidden-fintech-hubs-prague>

Spring program option for ARCH Students

Note: this program typ. runs early Feb. to June

- Min. GPA 3.00
- Enrollment Capacity: max. of 6 students for all disciplines
- Studio meets one day per week
 - Faculty's fluency in English may vary
 - 2-4 weeks given to decide which studio to enroll in
 - Studio projects range from very conceptual to very realistic (for example, may include structural calculations)
 - Some lectures will include opportunities to learn more about Prague
- Very good support for international students through the International Student Club, which also provides travel opportunities
- Housing is provided in an international residence hall, which is close to the architecture building
- Need to be self-disciplined and independent



THE COLLEGE of
ARCHITECTURE, PLANNING & DESIGN // K-STATE



Danish Institute for Study Abroad (DIS)

Copenhagen, Denmark

[Link to Program Information](#)



Unknown (n.d.). *Copenhagen* (photograph). Retrieved June 2017 from <http://www.ironman.com/triathlon/events/emea/ironman/copenhagen.aspx#axzz4kq2tnBhi>

Spring program option for ARCH Students

- Min. GPA 3.00
- Enrollment Capacity: max. of 5 students for all disciplines
- Studio professors are distinguished practicing Danish designers
- Studio meets three days a week
- Field trips are related to studio and well planned
- Offers highly organized orientation
- Very good support for international students
- Good assistance with housing
- Need to be inquisitive, motivated, and hard-working



THE COLLEGE of
ARCHITECTURE, PLANNING & DESIGN // K-STATE



University of Western Australia

Perth, Australia

[Link to Program Information](#)



Unknown (n.d.). *The University of Western Australia (Photograph)*. Retrieved June 2017 from <https://www.studyoptions.com/university-profiles/university-western-australia>

Spring program option for ARCH Students

Note: this program typ. runs mid-Feb to early June

- Min. GPA 3.00
- Enrollment Capacity: max. of 1 student for all disciplines
- Competitive placement in a World Top 100 university
- Has strong commitment to international exchange students and offers considerable support
- Need to be motivated and hardworking



THE COLLEGE of
ARCHITECTURE, PLANNING & DESIGN // K-STATE

Alternative Education Abroad Programs

(Available by petition only)

- Research potential programs
- Talk to your K-State Education Abroad Advisor, Amanda Mack, regarding program availability, use of financial aid, scholarships etc.
- Discuss your alternative education abroad plans with APDesign International Programs Director, Jessica Canfield
- This option requires extensive advance preparation and submission of a petition (including short essay responses) for endorsement by your Department, the APD International Studies Committee (ISC), and K-State Office of International Programs (OIP)
- Endorsement does NOT guarantee admission by the partner institution – application to the partner institution is a separate process
- See ‘Petitioning for an Alternative Education Abroad Program’ on APD website for guidelines <https://apdesign.k-state.edu/student-success/education-abroad/>

Education Abroad Scholarships

- K-State Office of International Program (OIP) Scholarships are available to all students participating in Education Abroad programs in Spring, Summer, and Fall
 - Questions, contact Amanda Mack mackah@ksu.edu
- APD Education Abroad Scholarships are available to all APD students participating in the Fall and Spring Italian Studies Program. Information will be available during Education Abroad Orientation meetings.
 - Questions, contact Courtney Markle markle@ksu.edu
- To be considered, complete the university scholarship application:
<https://www.k-state.edu/abroad/current-students/funding/scholarships.html>

[K-State home](#) » [OIP](#) » [Education Abroad](#) » [Current students](#) » [Funding Your Experience](#) » [Scholarships](#)

Questions

- For curriculum and/or academic plan questions meet with your [APD Academic Advisor](#)
- For Education Abroad questions meet with K-State OIP Education Abroad Advisor, [Amanda Mack \(mackah@ksu.edu\)](mailto:mackah@ksu.edu)
- Talk to a member of the [International Studies Committee](#):
 - Jessica Canfield, Director & LARCP Rep.
 - Byungsoo Kim, IAID Rep.
 - Otto Chanyakorn, ARCH Rep.
 - Adriana Molina, ARCH Rep.
 - Courtney Markle, Project Coordinator, SAS Office

INTERNSHIP

Michael McGlynn

The Architecture Academic Internship Program

Michael McGlynn

Associate Professor | Architecture

Director | Architecture Academic Internship Program

Department of Architecture

Kansas State University

Topics

- Intent
- Courses

Academic Internship Intent

- Elective program
- Unique professional and academic experience distinct from a typical summer architecture internship
- Intended to broaden your horizons
 - Must live in a place you have never lived before.
 - Must work for an architecture firm you have never worked for before.

Academic Internship Courses

- Summer
 - ARCH 503: Academic Internship Preparation
- Spring
 - ARCH 505: Academic Internship
 - ARCH 506: Academic Internship Seminar

ARCH 503:

Academic Internship Preparation

- Summer
- 1 Credit Hour
- Meet Tuesdays from 9:00-11:00am
- Two Purposes
 - Help you to land an internship in a US architecture firm
 - Prepare you to undertake a design research project for your sponsor firm

ARCH 505: Academic Internship

- Spring
- 6 Credit Hours + Pay + AXP Hours
- Work in an architecture firm that you haven't worked for before in a place you haven't lived before. (A new experience away from home.)
- 16 weeks @ 40 hours/week = 640 hours
- 16.00 - 24.00/hour depending on location
- Prepare a poster presenting an overview of your practical experience

ARCH 506: Academic Internship Seminar

- Spring
- 3 Credit Hours
- Undertake a design research project for your sponsor firm

KANSAS CITY DESIGN CENTER | KCDC

Michael Gibson + Kylie McConnell

KCDC

Kansas City Design Center



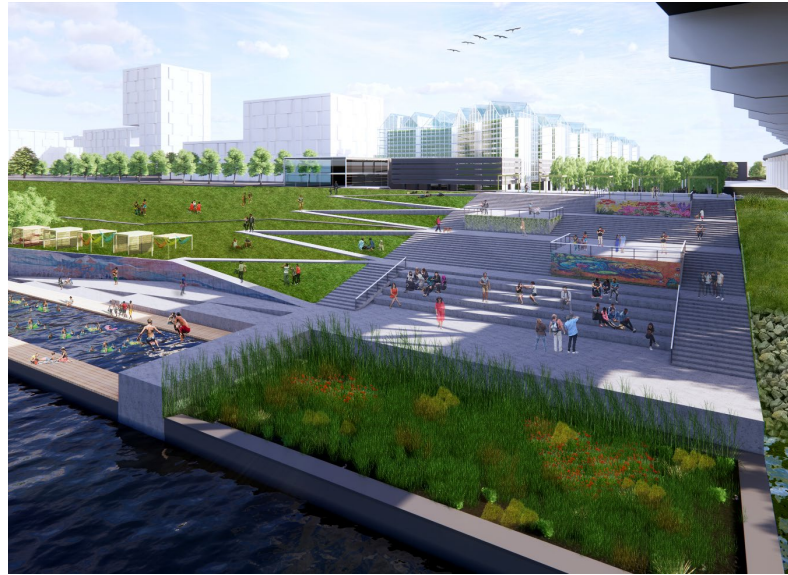
Why KCDC?

- Be part of a unique learning laboratory located in the downtown Kansas City that provides students the opportunity to **fully immerse themselves in on-site project studies**
- Actively explore **current urban design issues** facing Kansas City's future development
- Participate in an **interdisciplinary urban design** studio that forms partnerships with local client groups, community members and professional firms
- Develop **design visions and proposals** that address major architectural, urban design and urban planning issues throughout metropolitan Kansas City
- Participate in **critical dialogue** concerning architecture, planning and design issues with public agencies and local community organizations

KCDC

What we do:

Located in the heart of downtown Kansas City, the Kansas City Design Center (KCDC) is a nationally-recognized, service-learning urban design program that operates as a 501(c)3 nonprofit partnership among local civic leaders, professional designers, and Kansas State University.



KCDC

Who we are:

Each semester Kansas State University students participate in studio and seminar courses at KCDC to learn from K-State faculty, professionals, and community stakeholders.

The projects are interdisciplinary in focus and a variety of disciplines at APDesign are encouraged to participate.



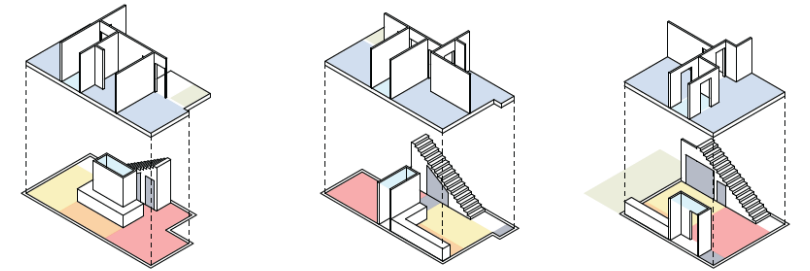
KCDC

AY23-24 project

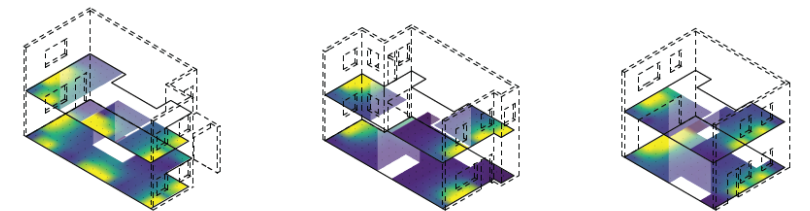
The current studio is collaborating with Wyandotte County/Kansas City Kansas to reimagine undeveloped land around Bethany Park in a masterplan focusing on net zero affordable housing and sustainable neighborhood design.

Students are proposing new housing types that address small homes, intergenerational housing, mix uses, and shared amenities.

The studio is also collaborating with KC Habitat for Humanity on an exhibit showcasing high performance prefab construction that will be displayed at CABA and KCK's Third Friday Arts Walk.



Program Diagram

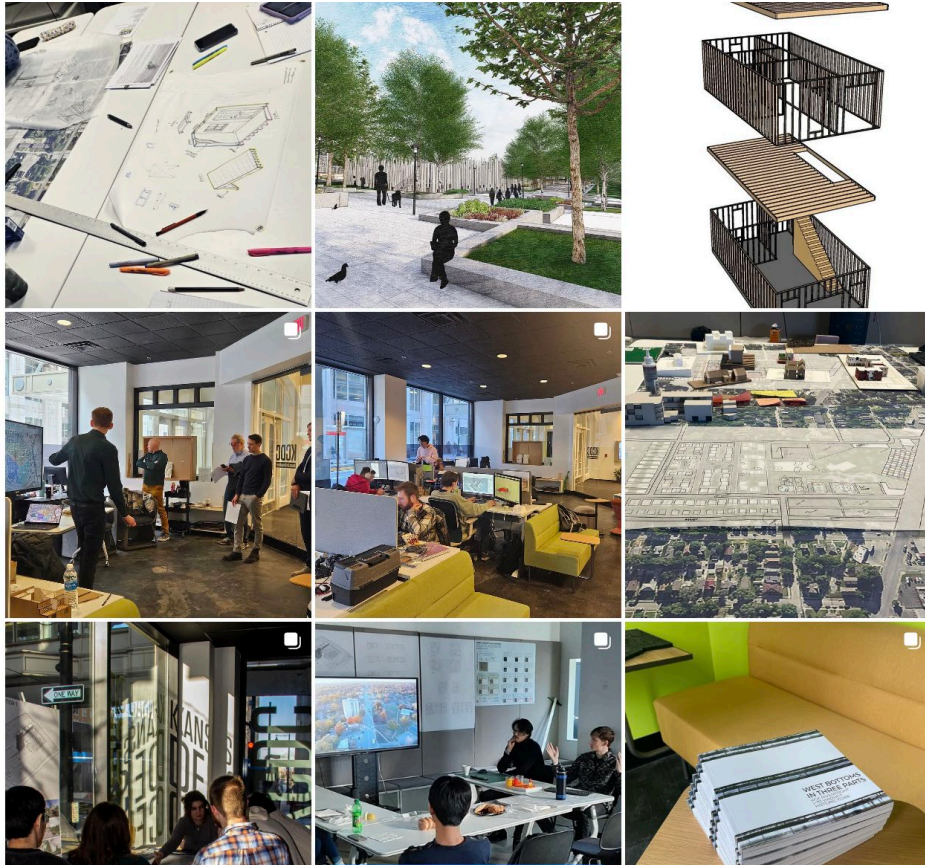


Daylight Factor

Learn more about KCDC:

Instagram @[kcdesigncenter](https://www.instagram.com/kcdesigncenter)

<http://www.kcdesigncenter.org/>



KCDC
Kansas City Design Center

[About](#) / [Projects](#) / [Events](#) / [News](#) / [Join](#) / [Store](#)



KCDC
Kansas City Design Center

APDESIGN

THE COLLEGE of
ARCHITECTURE, PLANNING & DESIGN // K-STATE

THE ADVISING PROCESS

Mitzi Farmer

4TH YEAR DISCUSSION | PATHS

	SUMMER	FALL	SPRING	SUMMER
Option 1 or 1B with KCDC No Internship or Study Abroad	————	ADS 5	ADS 6 On Campus or KCDC	————
Option 2 Study Abroad Only	————	ADS 5	ADS 6 Study Abroad Italy or Elsewhere	————
Option 3 or 3B with KCDC Internship Only	ADS 5 + PREP	ADS 6 On Campus or KCDC	INTERN <div style="background-color: #f9c79d; width: 100px; height: 15px; border-radius: 5px;"></div>	
Option 4 Internship and Study Abroad	ADS 5 + PREP	ADS 6 Study Abroad Italy Only	INTERN <div style="background-color: #f9c79d; width: 100px; height: 15px; border-radius: 5px;"></div>	

QUESTIONS + ANSWERS

Next Steps

- Review and consider the options presented today
 - You will be notified via email when the slides/documents are updated on the APD website
- Discuss the options and your preferences with your parents/family/friends
- In the Fall, meet with your academic advisor to determine your plan
- Attend the Fall meeting on “How to apply for Off-Campus Study”
 - You will receive an email with more information in late August/early September
- **Submit your Off-Campus Study Application, Due Friday, October 25**
 - You will receive instructions in late August/early September